

# 症例 1 : 38歳, 女性 0妊0産

---

【主訴】血尿、血便

【現病歴】4年前より血尿が時折出現。2か月ほど前より血便も出現。

【既往歴】16歳時に卵巣腫瘍（詳細不明）にて開腹手術。

# 血液検査

---

## 血液一般

WBC	$6.5 \times 10^3$
RBC	$2.74 \times 10^6$ ↓
Hb	7.8g/dl ↓
Ht	23.7% ↓
PLT	$33.0 \times 10^3$

## 血液生化学

AST	10 IU/l
ALT	6IU/l
LDH	140 IU/l

ALP	139 IU/l
BUN	9 mg/dl
Cre	1.19 mg/dl ↑
Na	138 mEq/l
K	3.8 mEq/l
Cl	106 mEq/l
Ca	8.3mg/dl
eGFR	42.0ml/min ↓
CRP	1.13mg/dl ↑

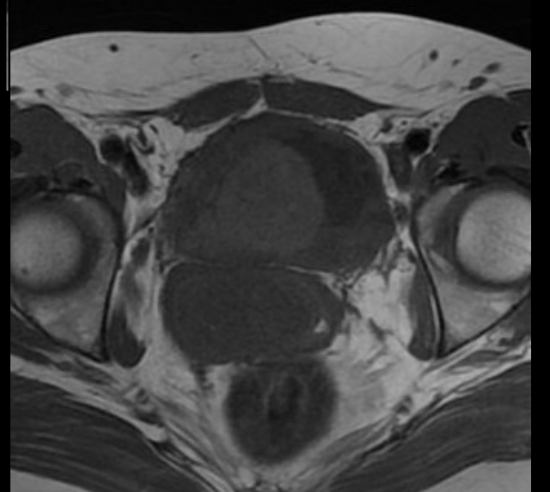
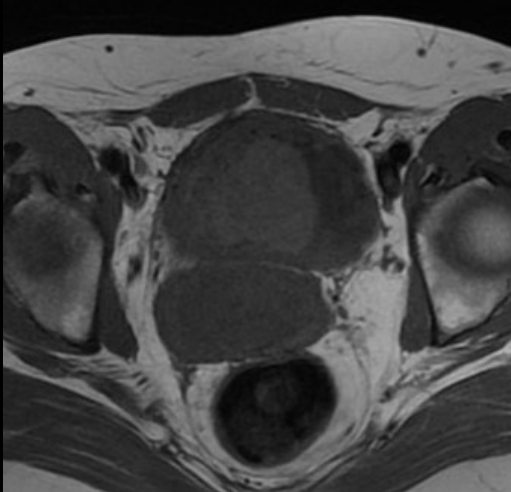
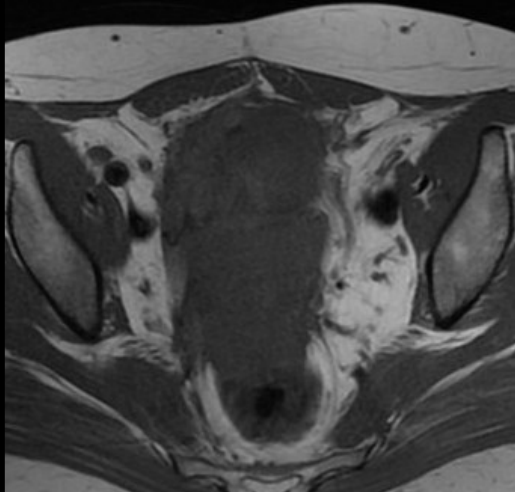
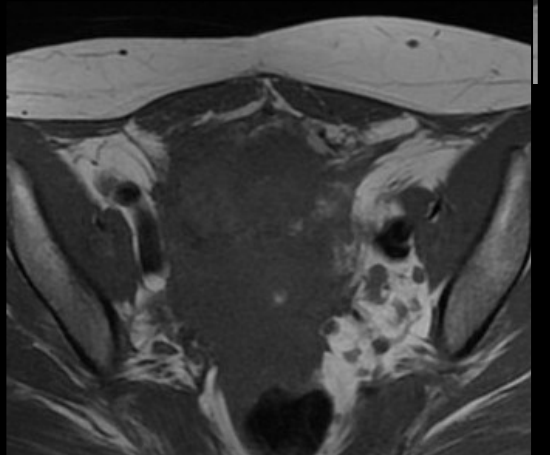
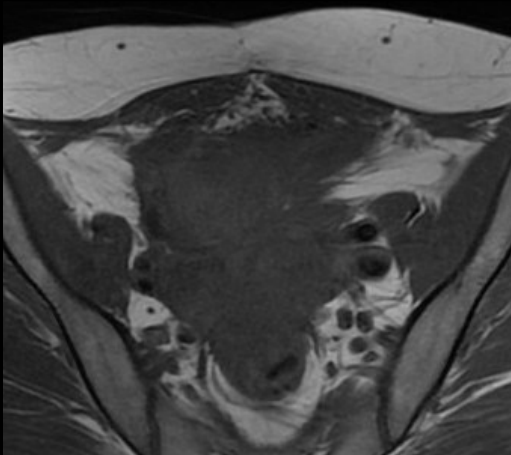
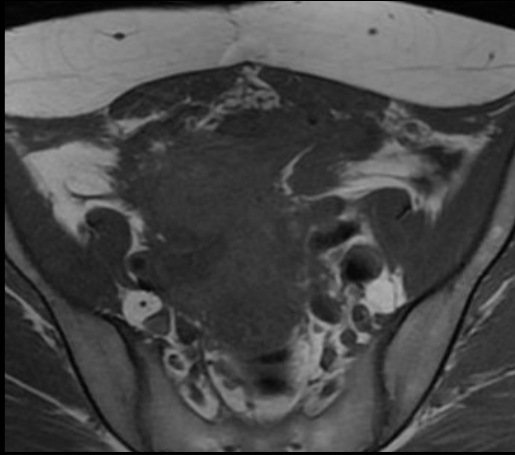
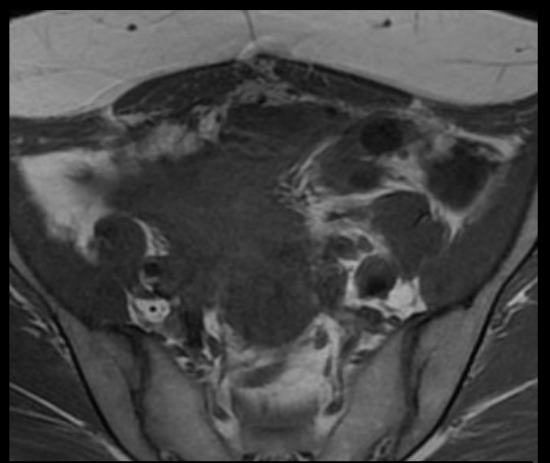
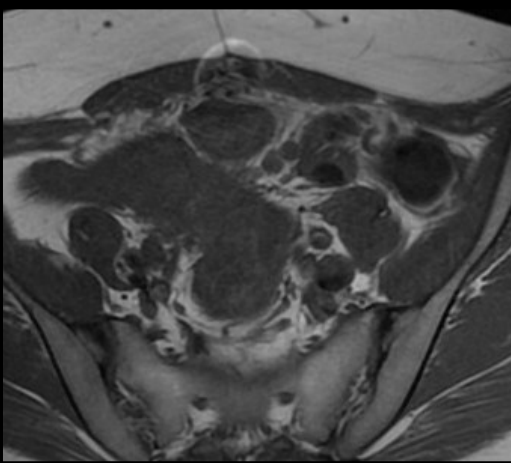
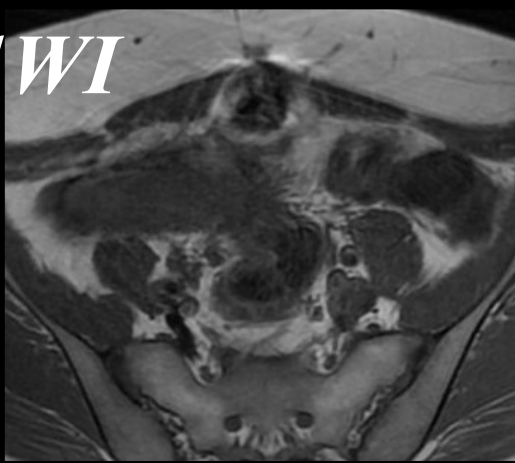
## 腫瘍マーカー

CA-125	159U/ml ↑
CA19-9	65U/ml ↑
CEA	1.7U/ml

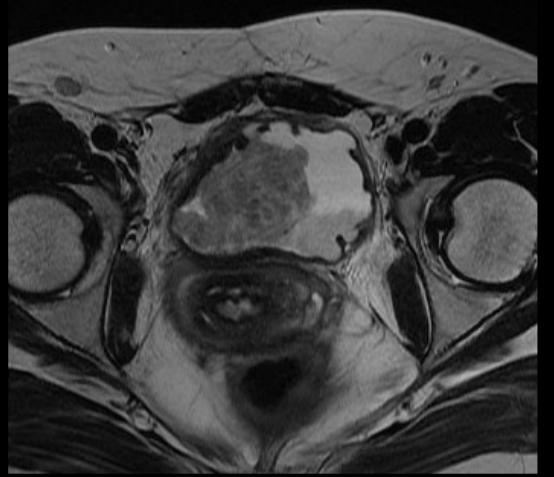
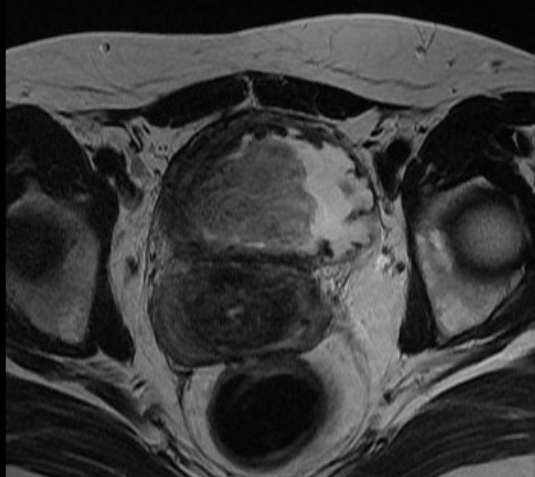
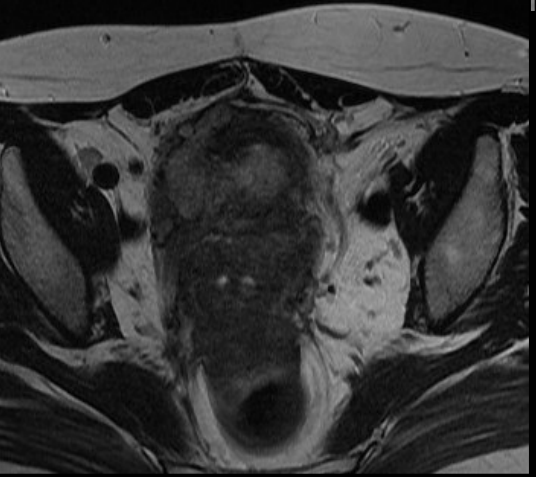
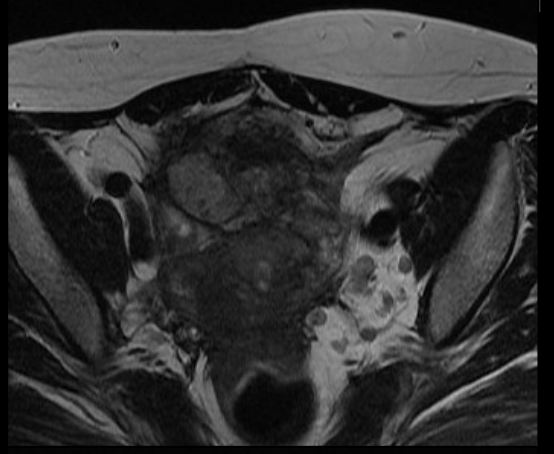
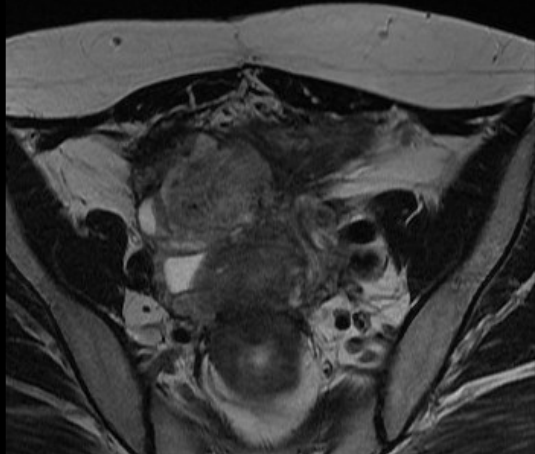
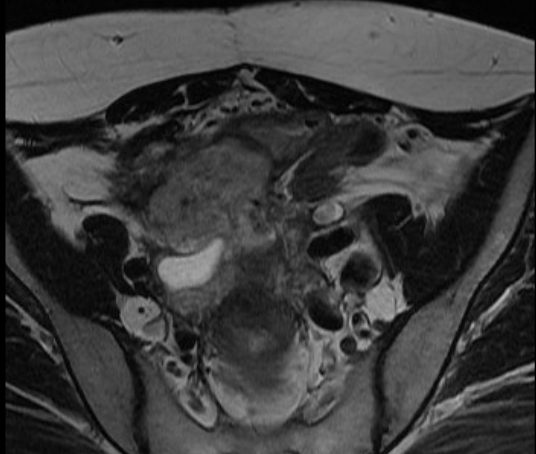
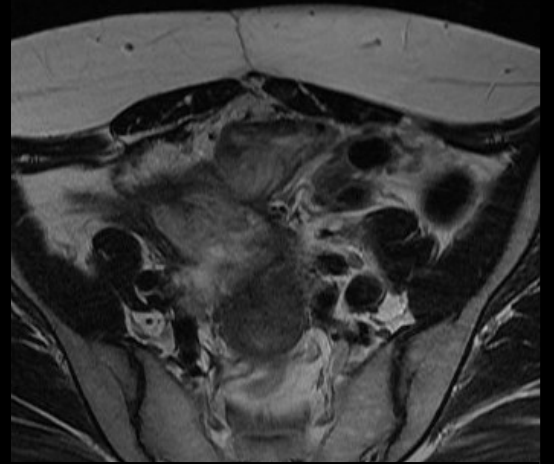
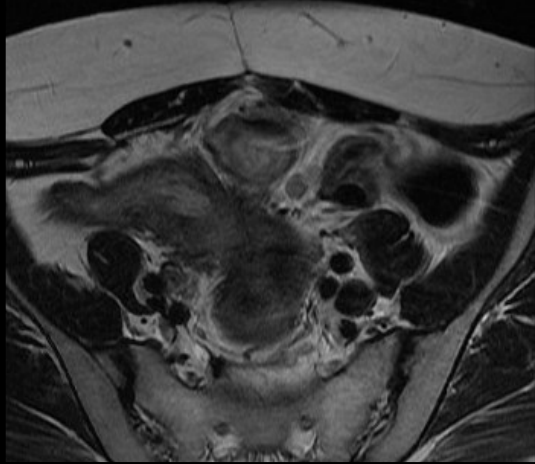
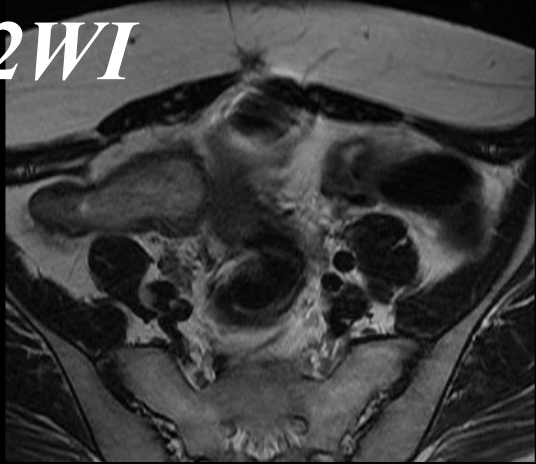
## 尿定性

潜血	(3+)
赤血球	> 100/一視野
白血球	> 100/一視野

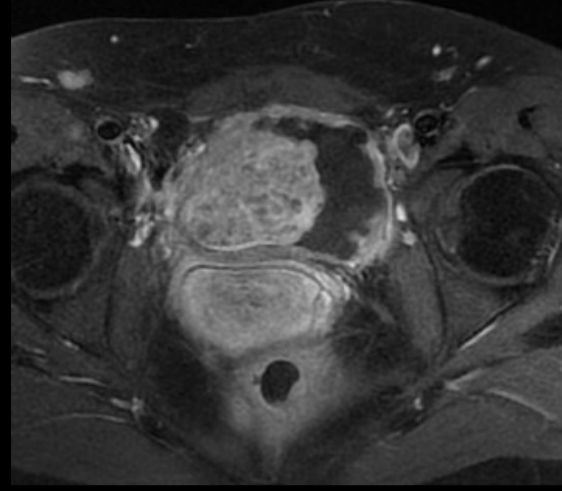
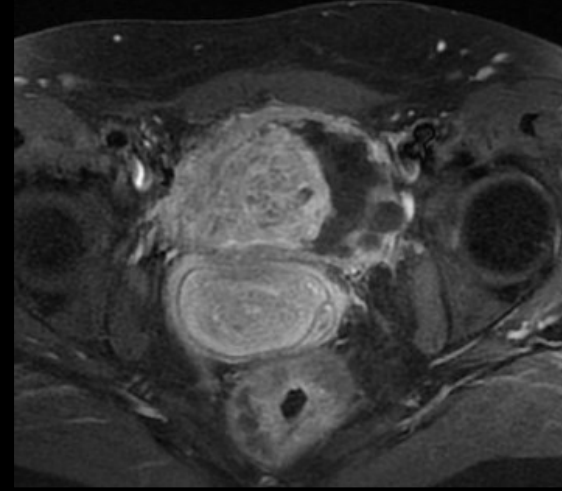
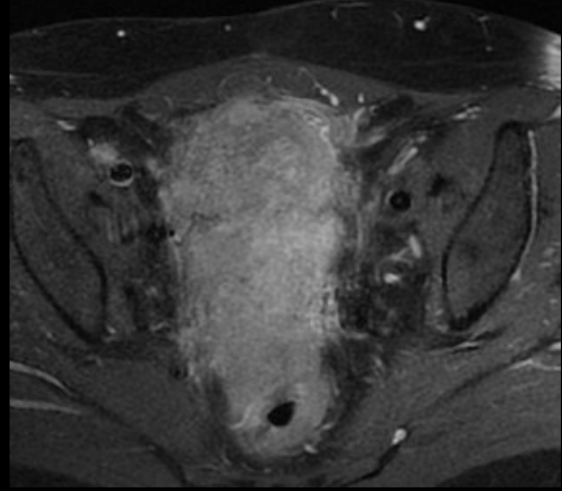
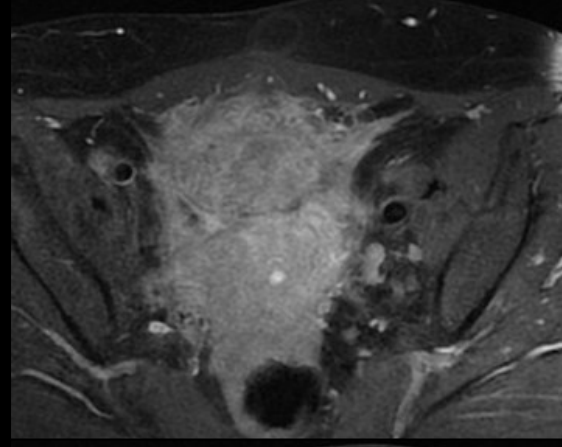
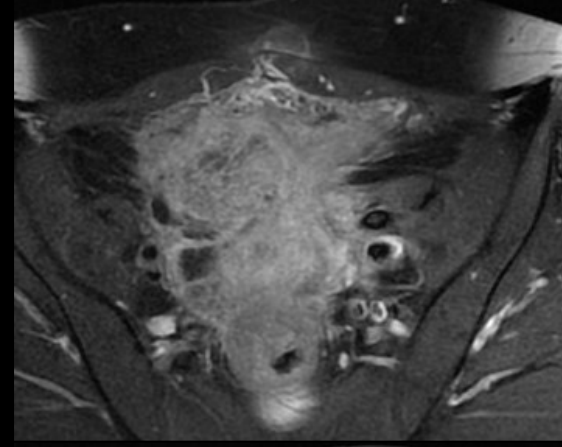
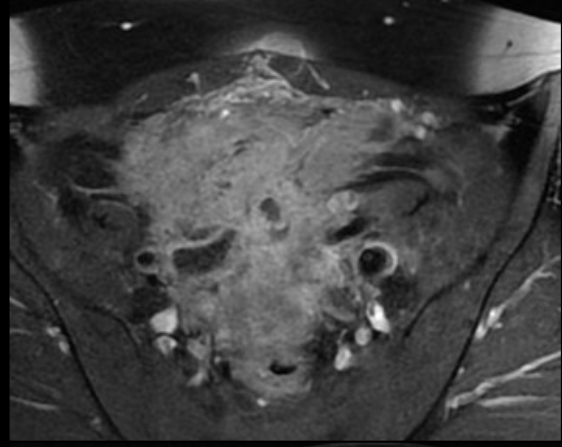
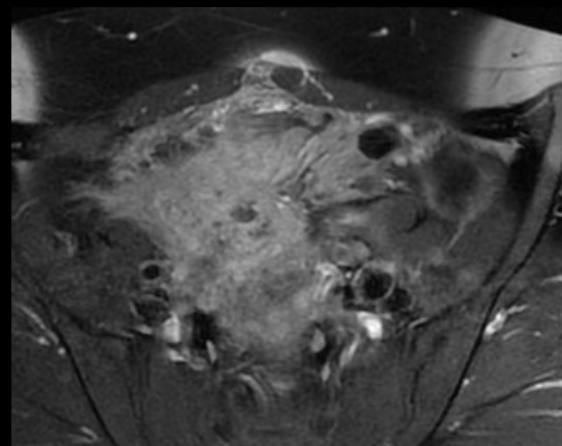
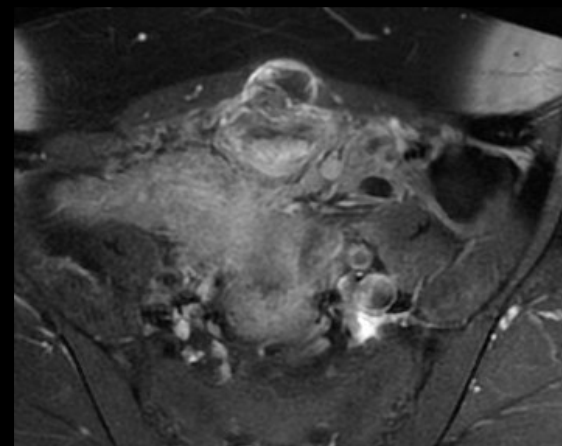
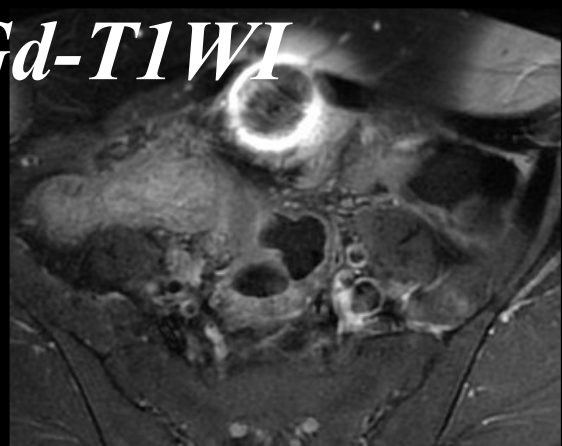
*T1WI*



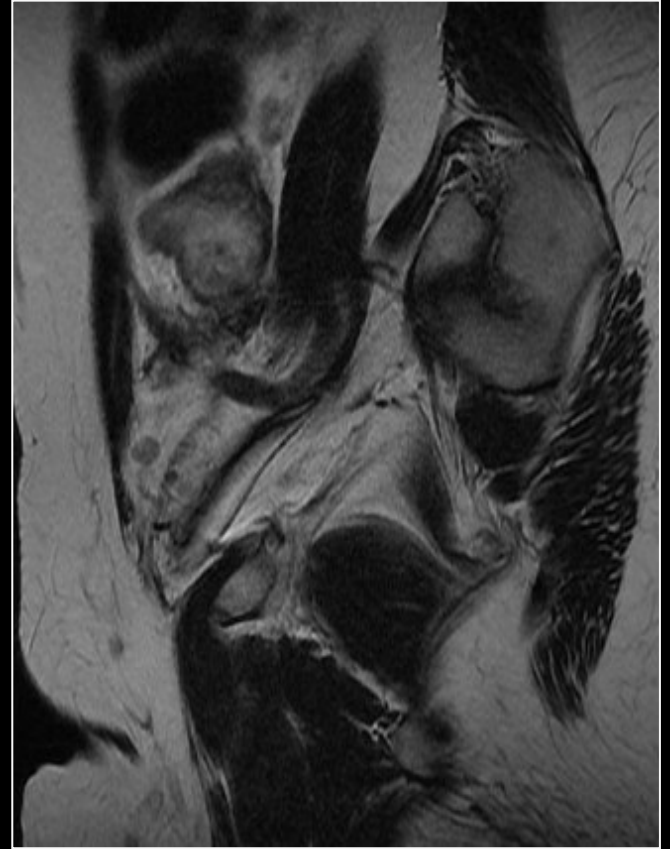
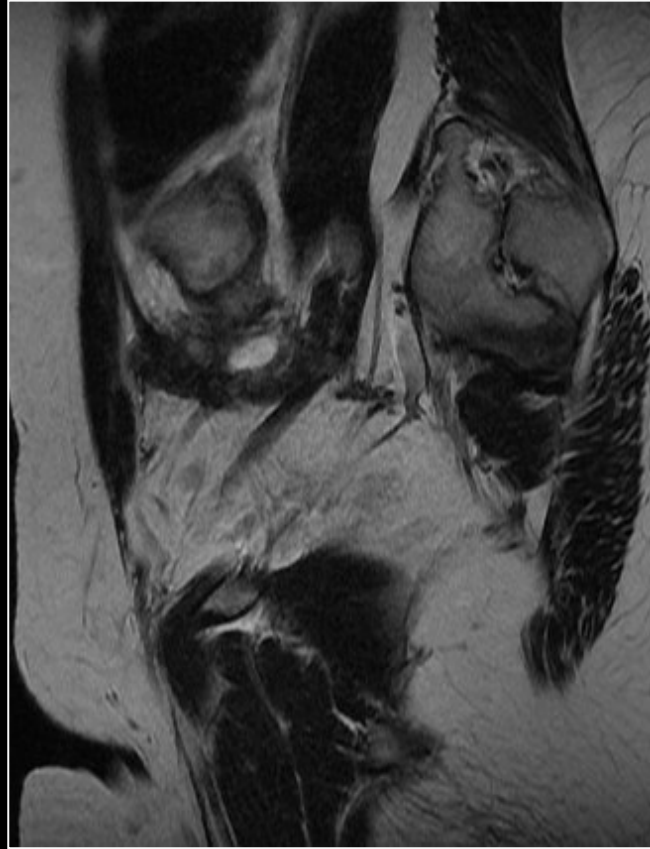
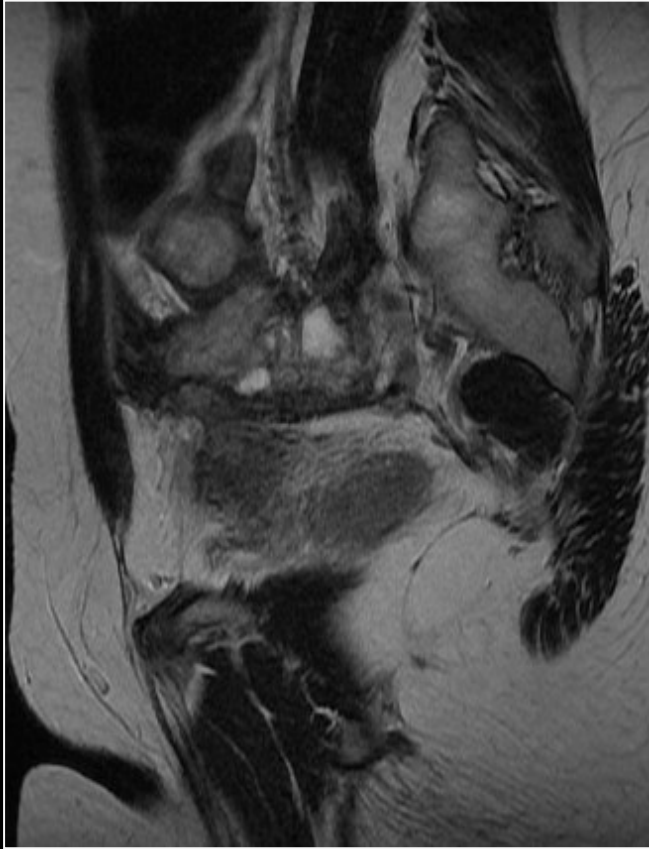
*T2WI*

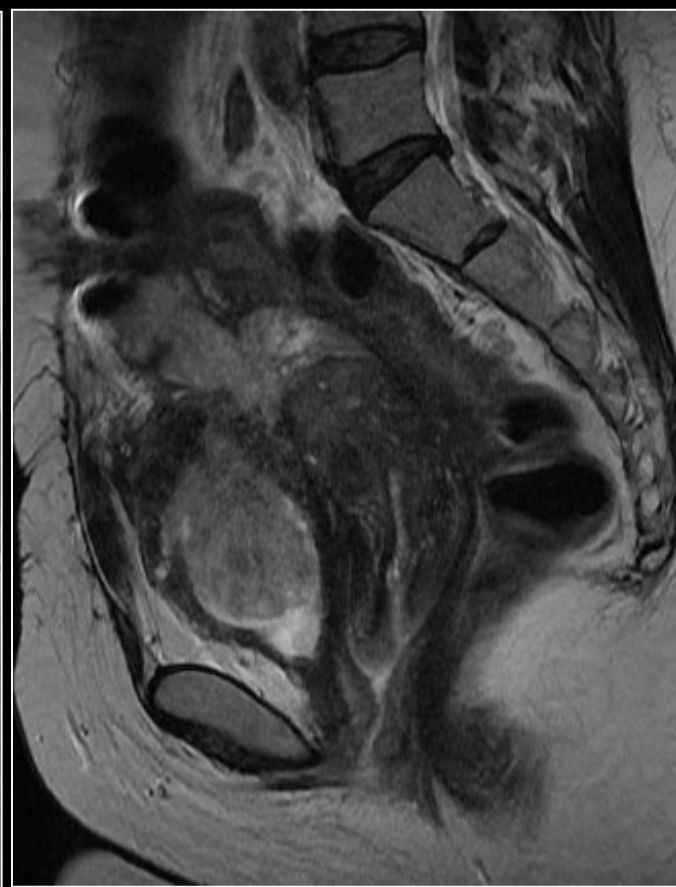
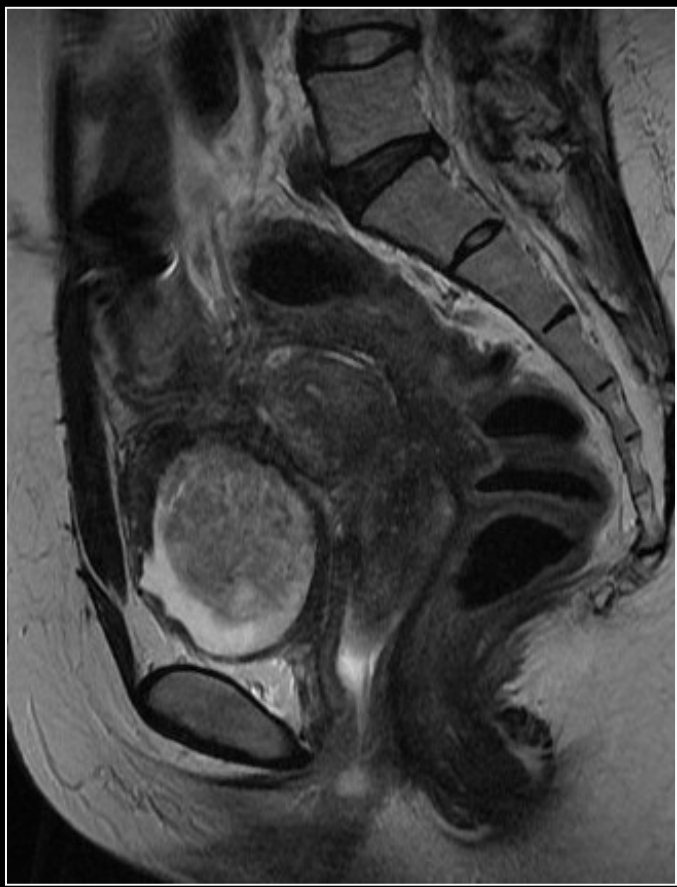


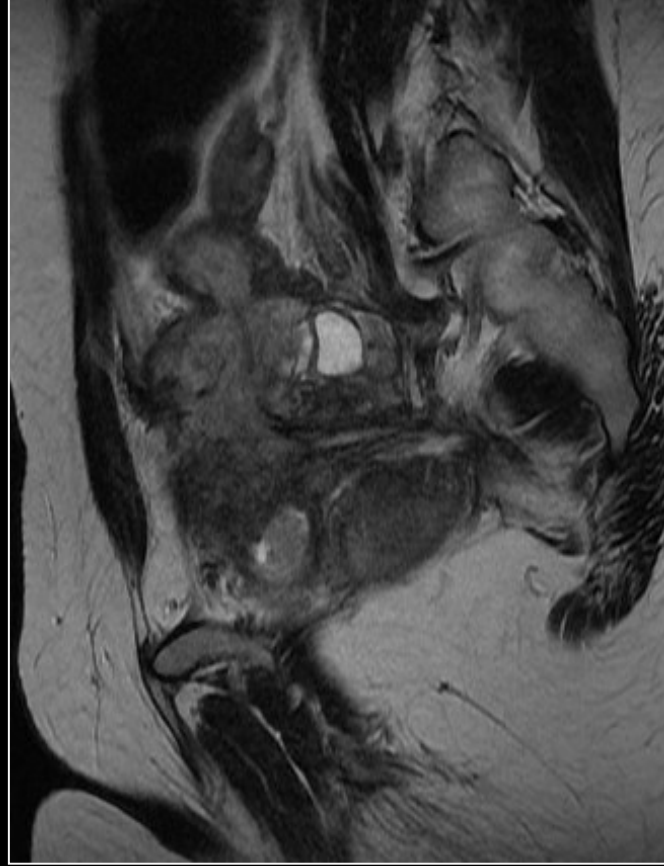
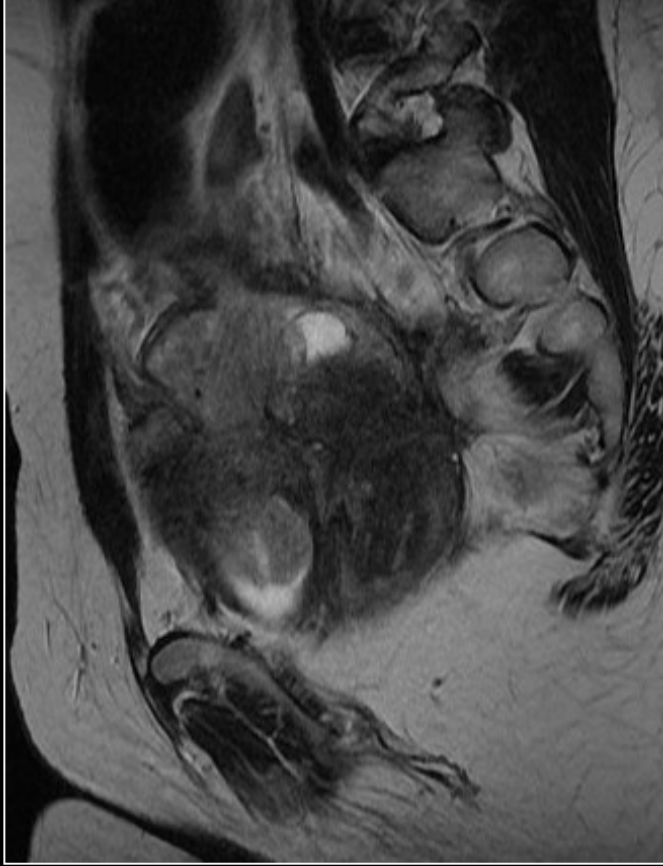
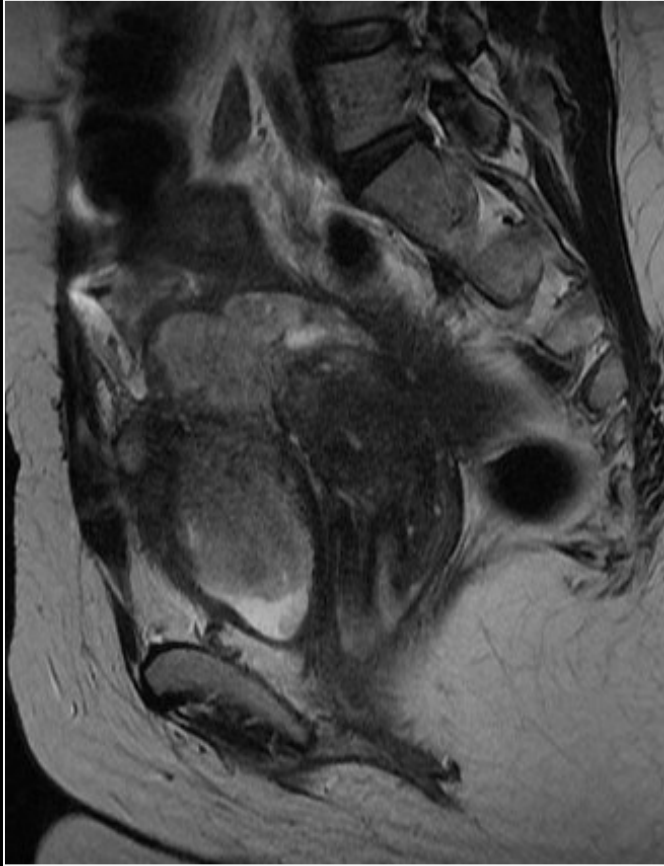
*Gd-T1WI*



*T2WI (sag.)*

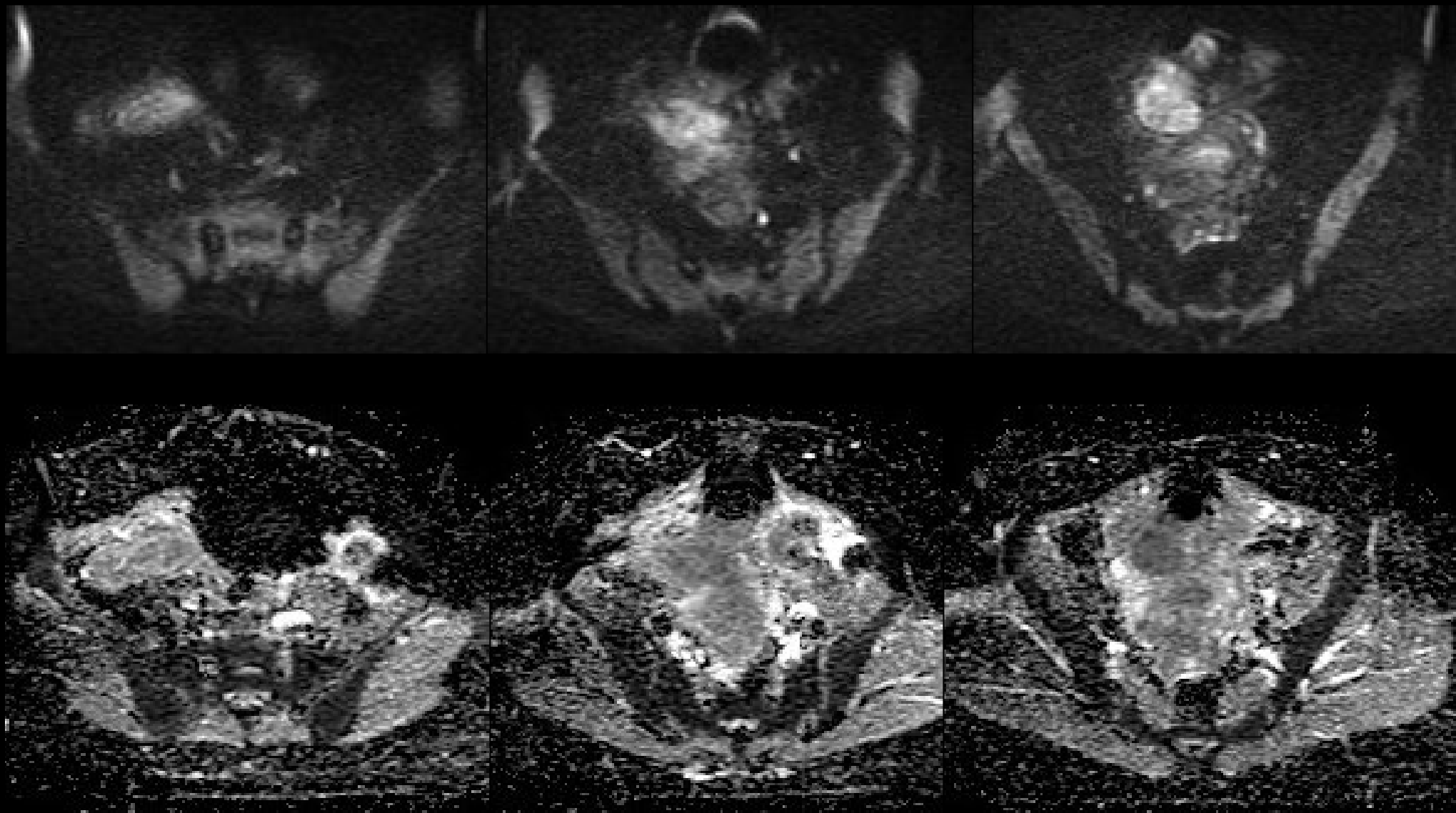








*DWI & ADC map*

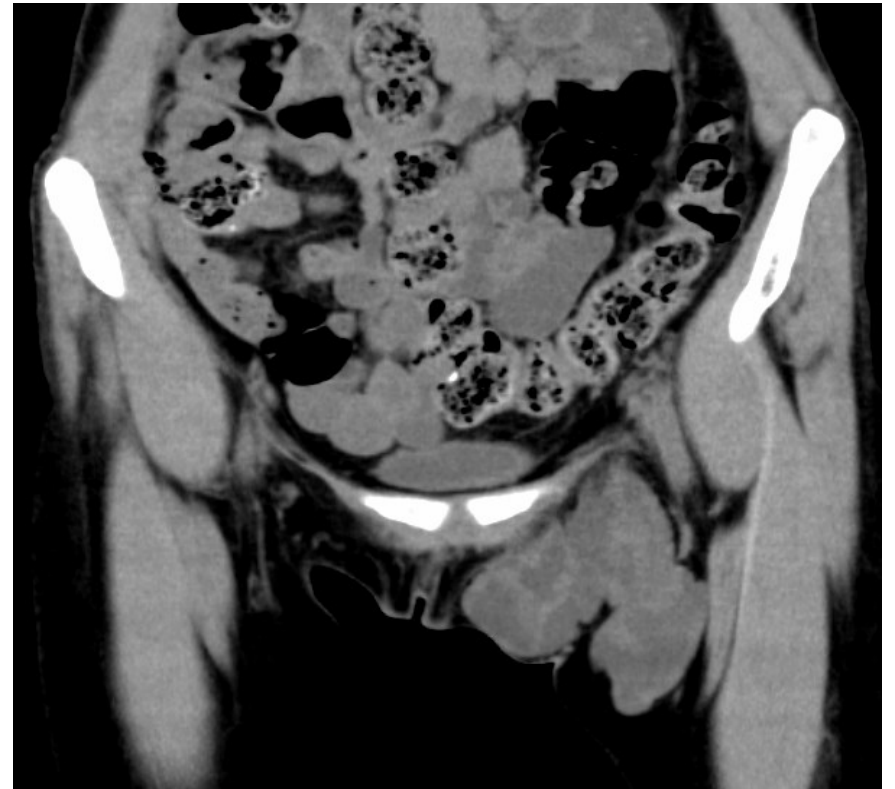


## 症例2.

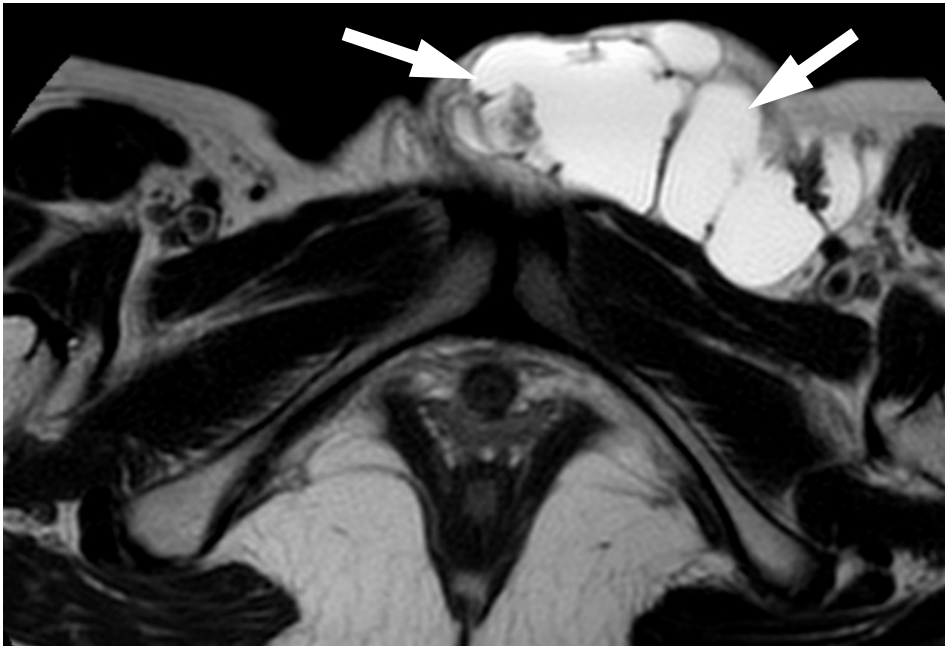
### 31歳 女性 鼠径部腫瘍

妊娠中に左鼠径部に増大傾向を呈する腫瘍を  
自覚、

# US & CT



# MRI



**T2WI**



**T1WI**

# 症例 3

---

9か月 女児

生後4カ月に嘔吐(非胆汁性・非血性)が続くため

近医にてUSで腹部腫瘍が指摘され、当院小児科に紹介となった。

出生40週0日 アプガースコア9/10

出生時体重4,000g、その他異常なし

家族歴 特記事項なし

入院時所見：全身状態：良好、身体学的に  
異常所見なし

血液検査：血液一般・生化学著変なし

NSE 29.5ng/mL↑ (10 $\geq$ ), CEA 2.0ng/mL (5 $\geq$ ),

AFP 113ng/mL, HCG 0.5>mIU/mL (0.5 $\geq$ ),

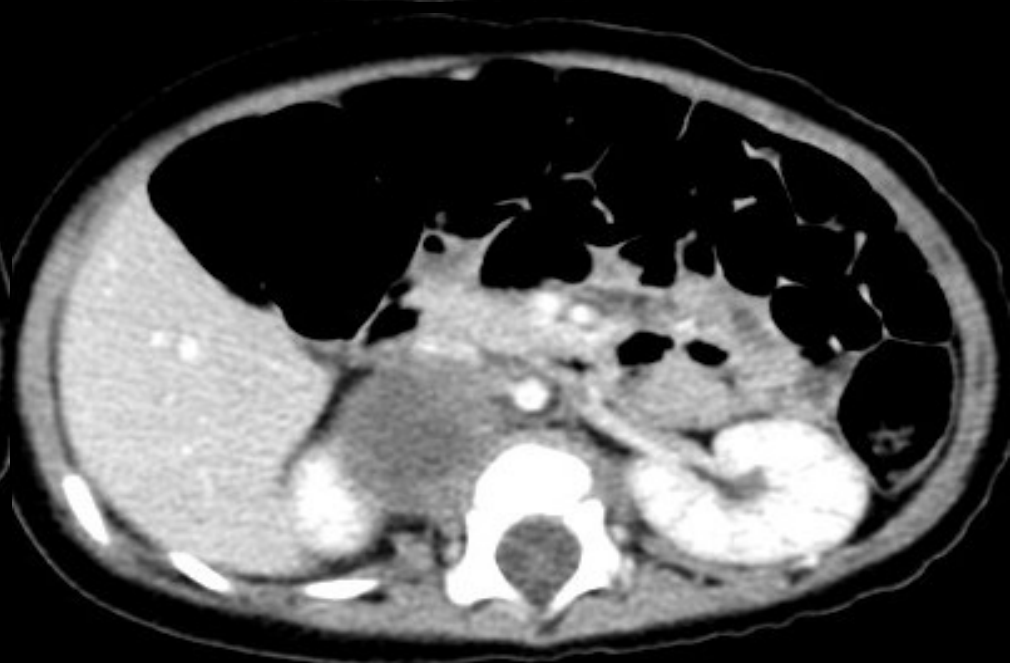
$\beta$ HCG 0.1 $\geq$ ng/mL (0.1 $\geq$ )

尿中VMA, HVA基準値内。

# Unenhanced & Enhanced CT

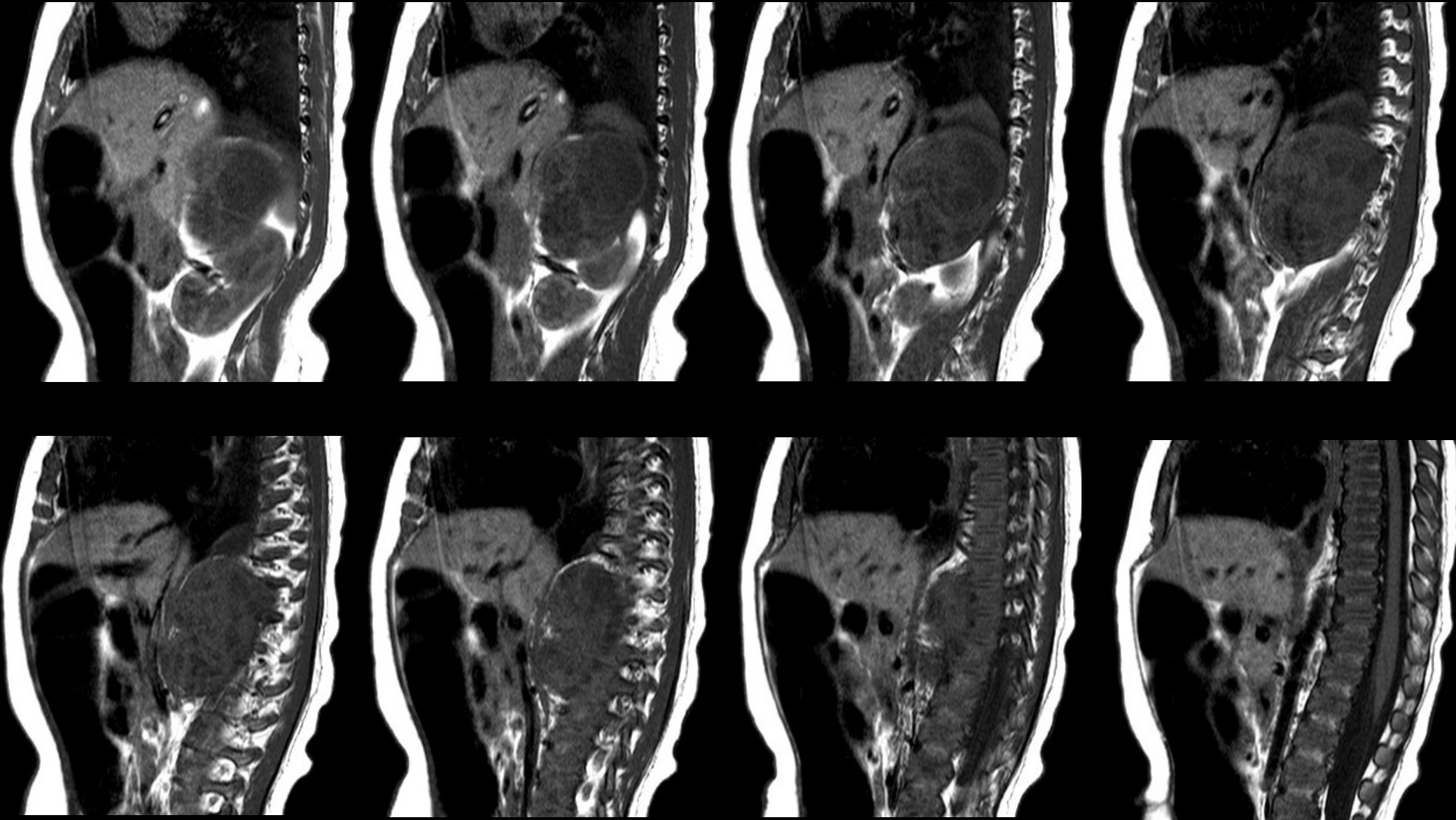


# Enhanced CT

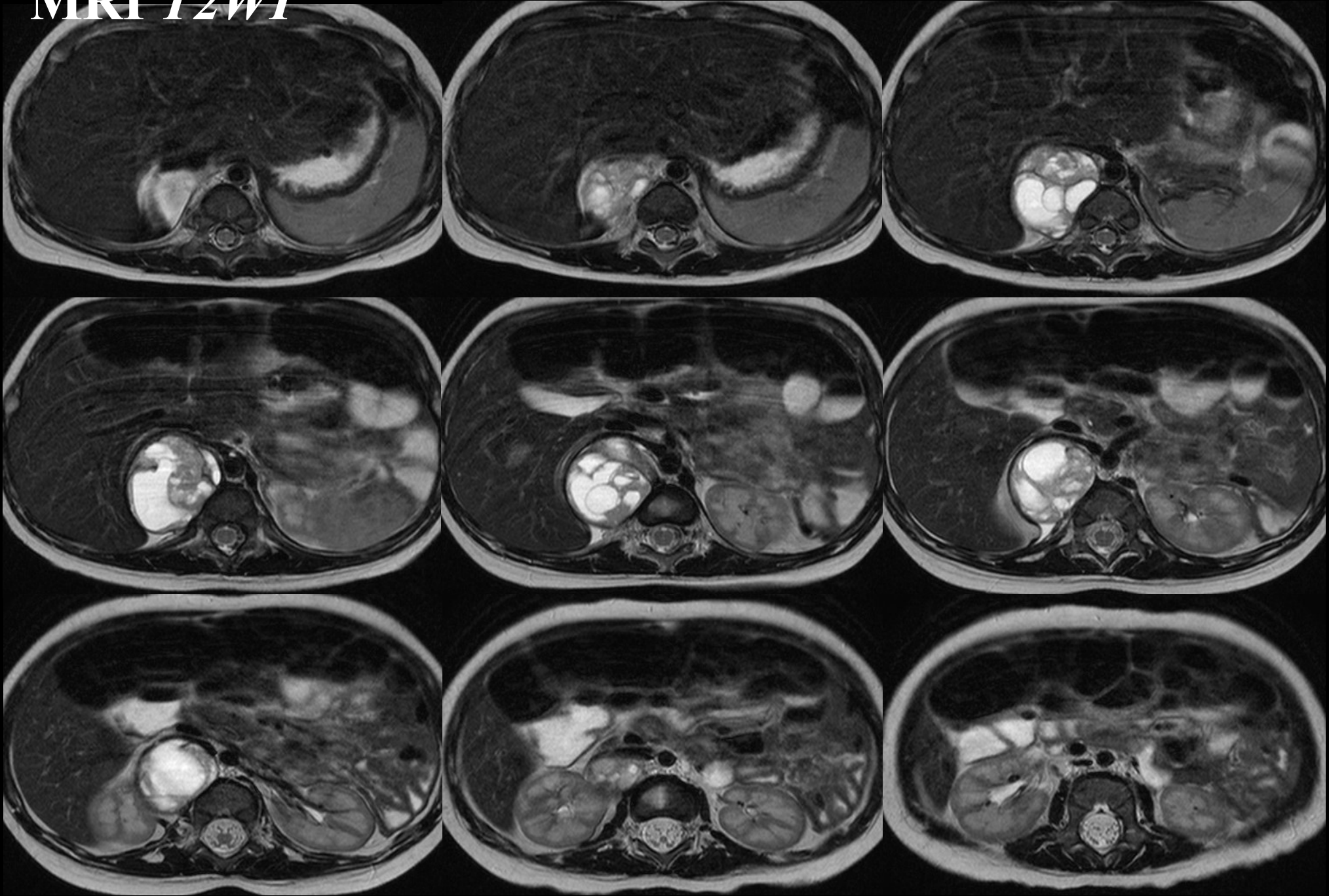




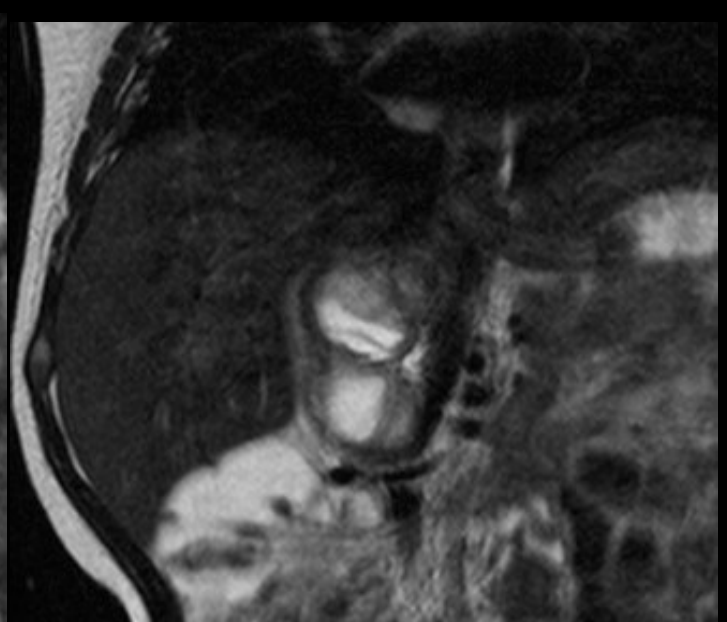
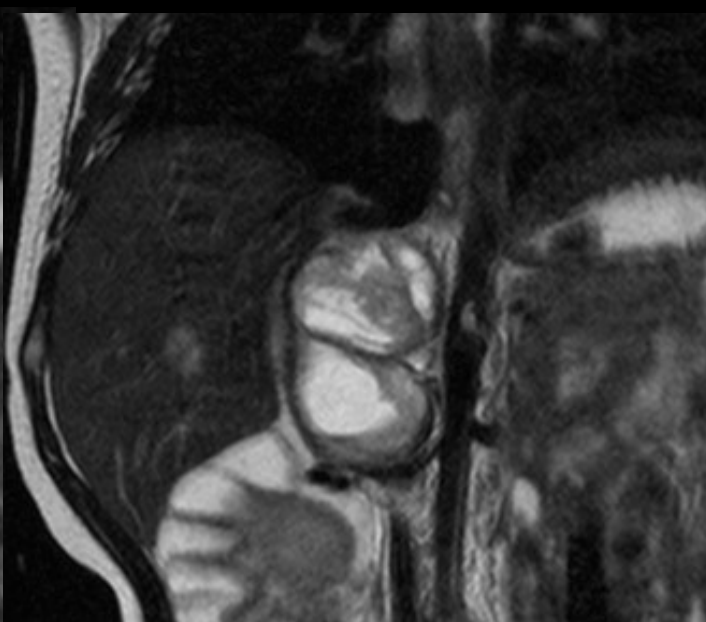
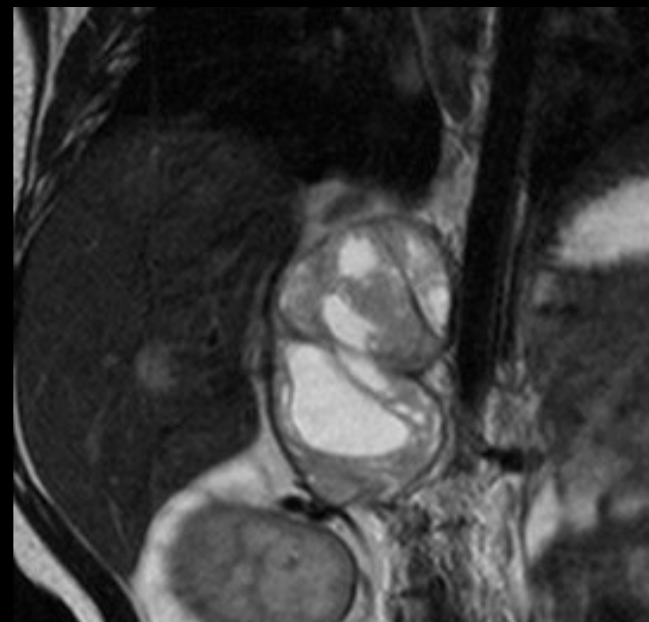
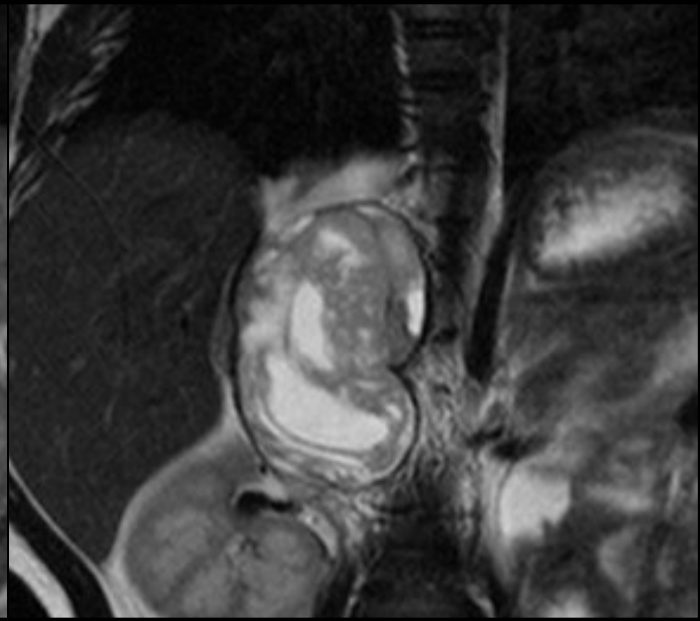
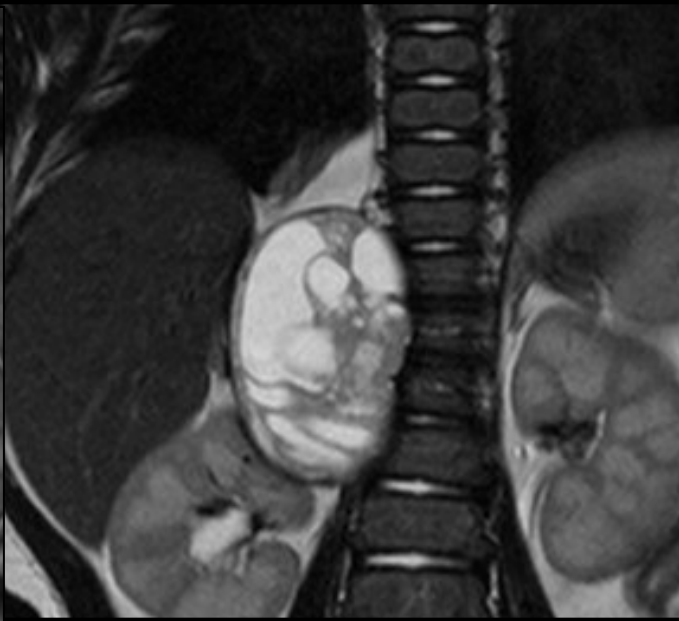
# MRI *T1WI*(sagittal)



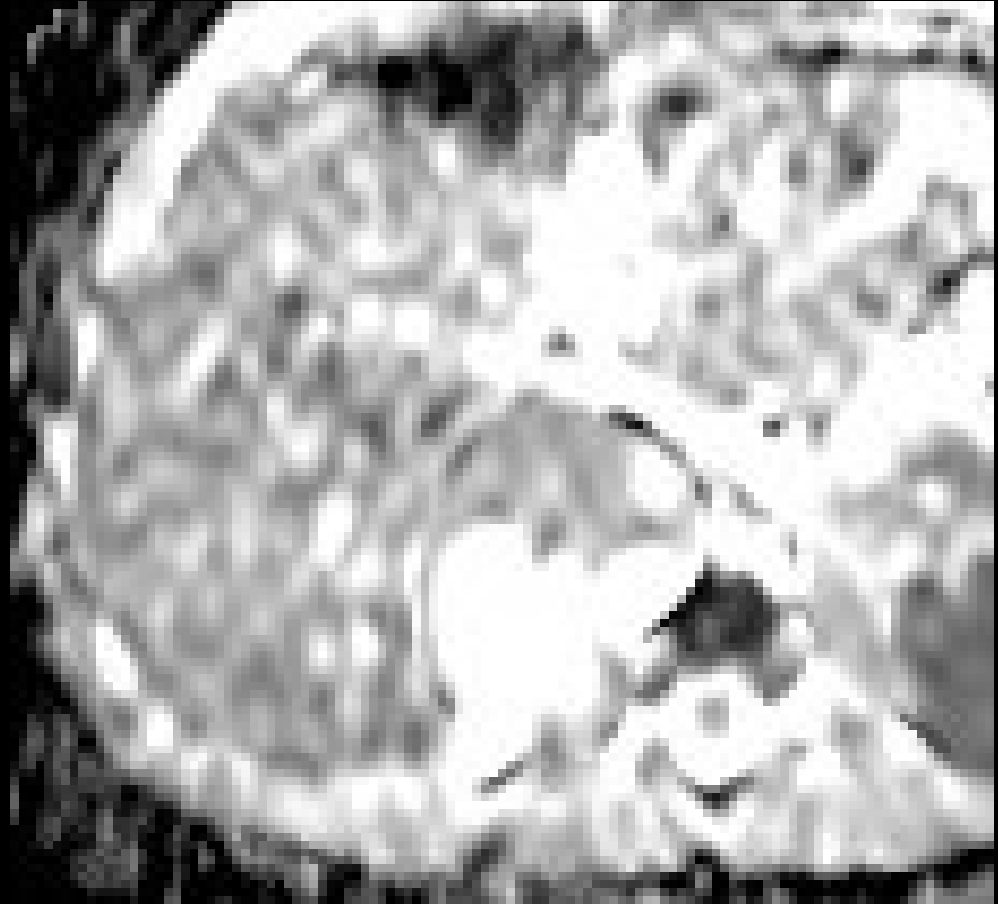
**MRI T2WI**



# MRI *T2WI*(coronal)



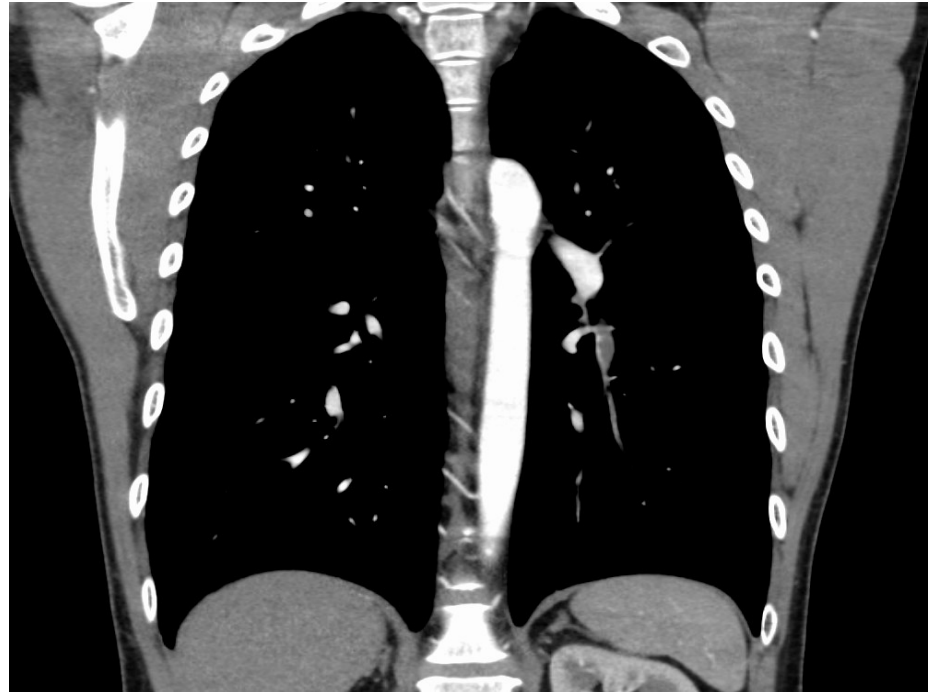
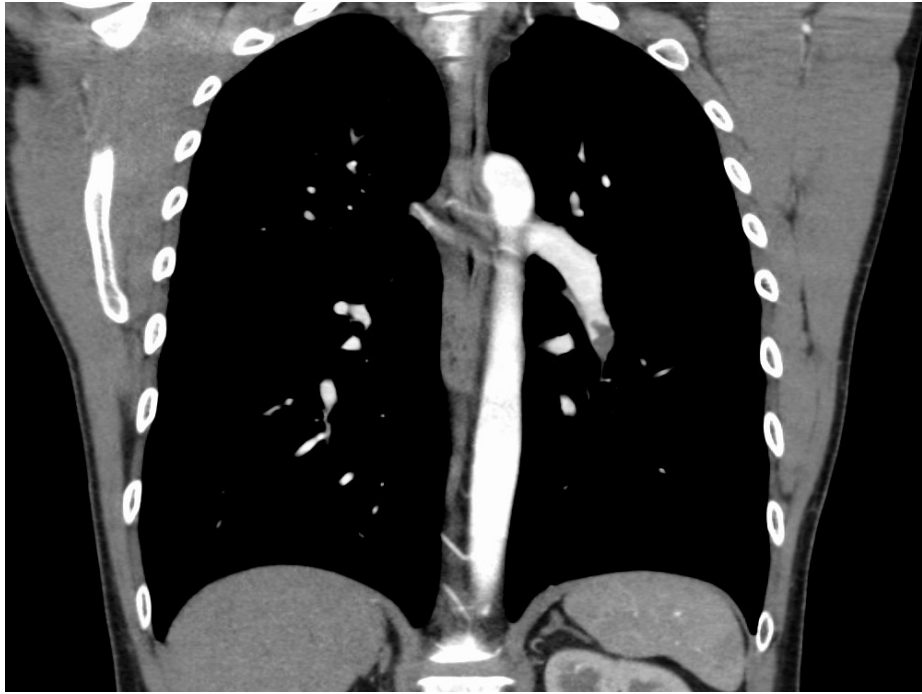
# MRI *DWI* & *ADCmap*

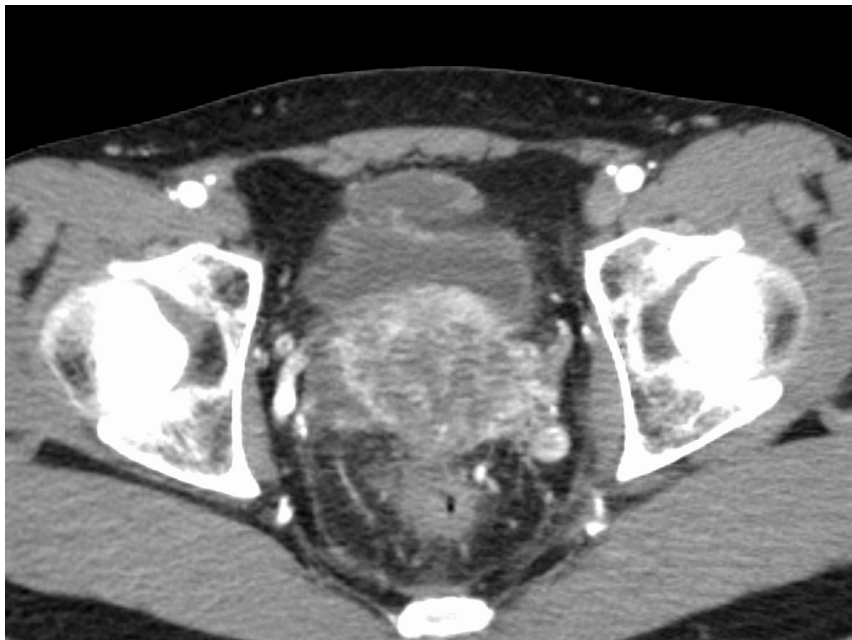
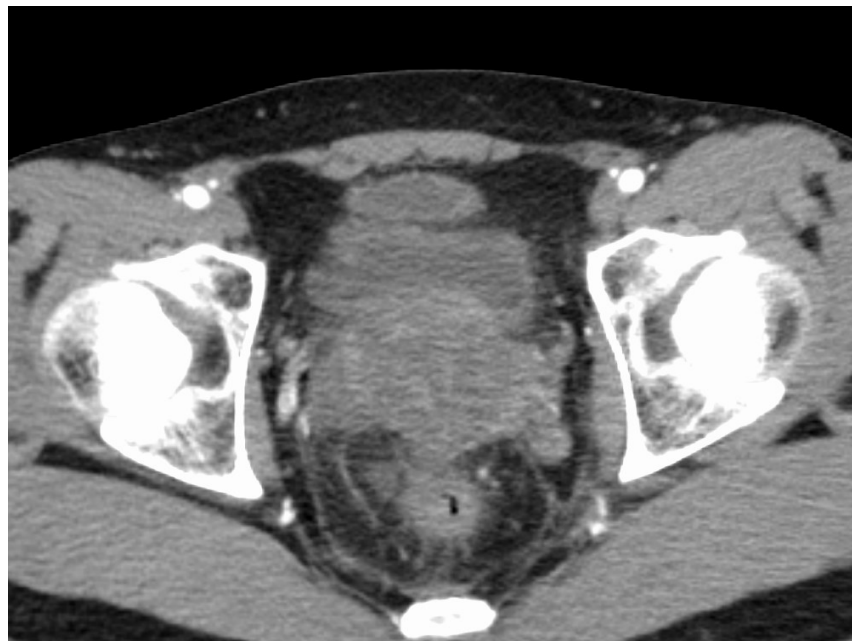
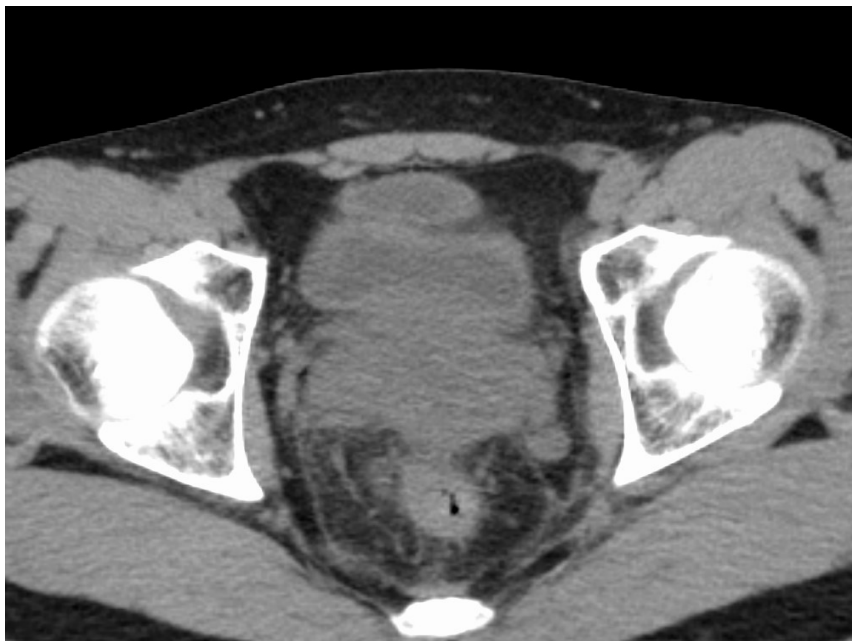


# 症例4. 36歳 男性

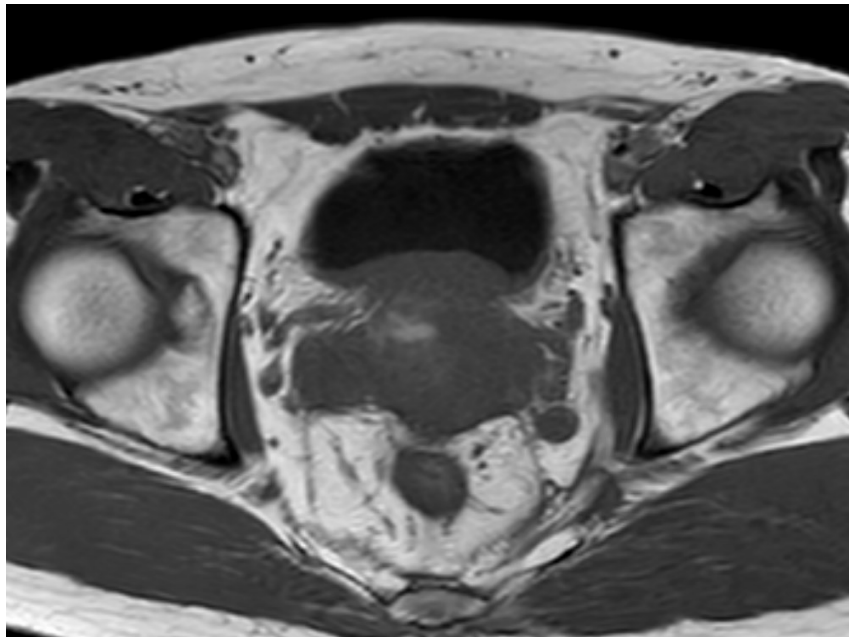
【現病歴】約8ヶ月前、血精液症で近医受診するも経過観察とされる。肉眼的血尿により、再度近医受診、MRIで前立腺に腫瘍が疑われる。

- LD                      630 U/L
- WBC                     20.7 X10<sup>3</sup>/μL
  - Neutro                50.0 %
  - Meta                    7.0 %
  - My                      13.0 %

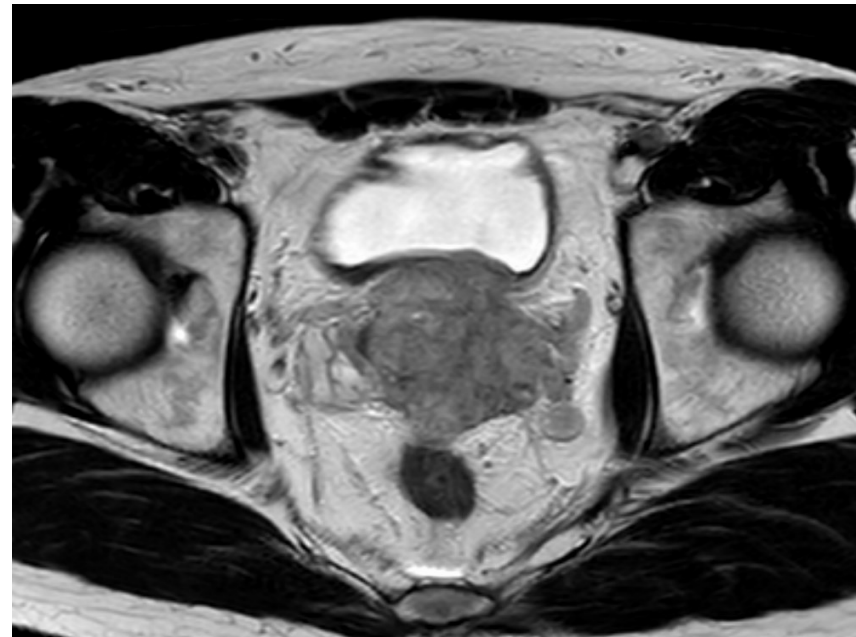




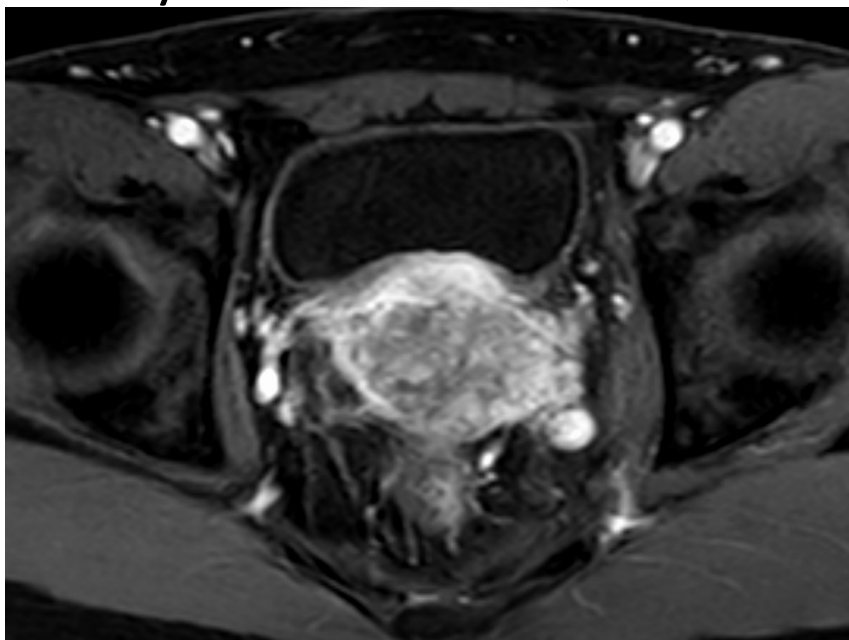
T1WI



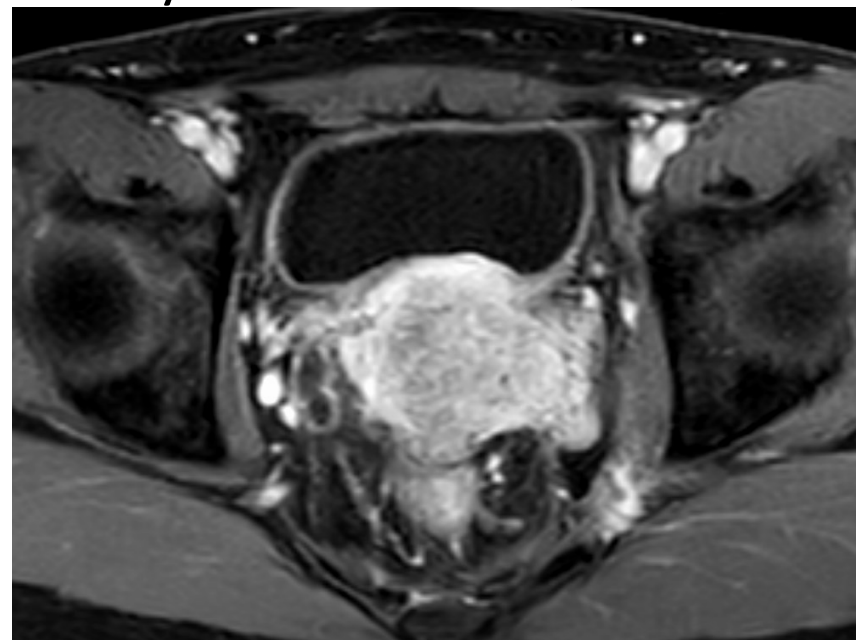
T2WI



脂肪抑制dynamic MRI 早期相



脂肪抑制dynamic MRI 後期相

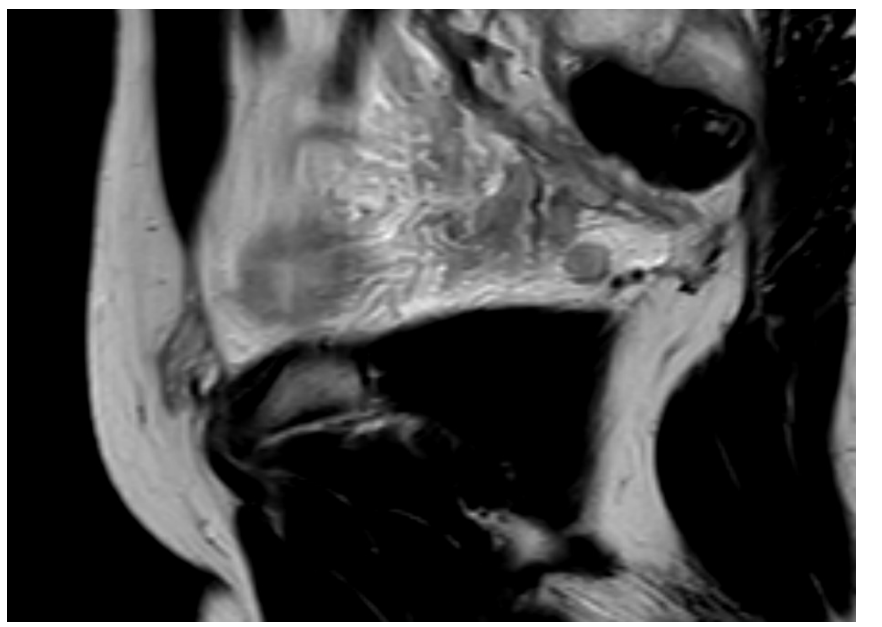
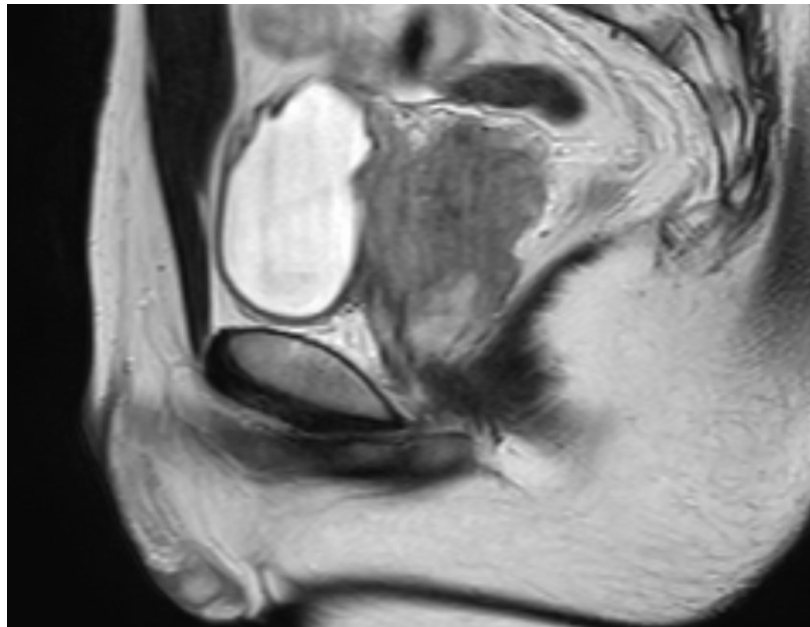
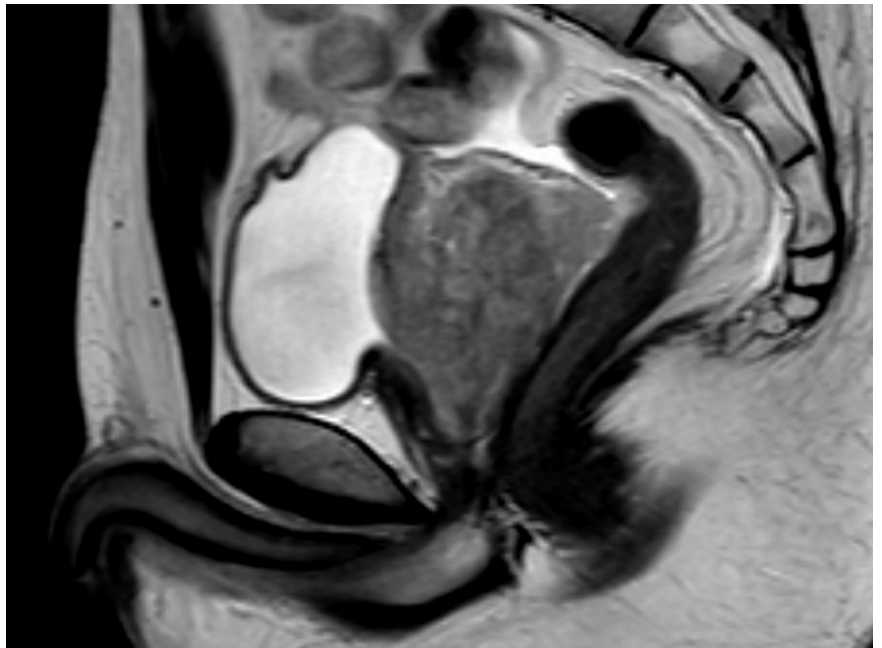
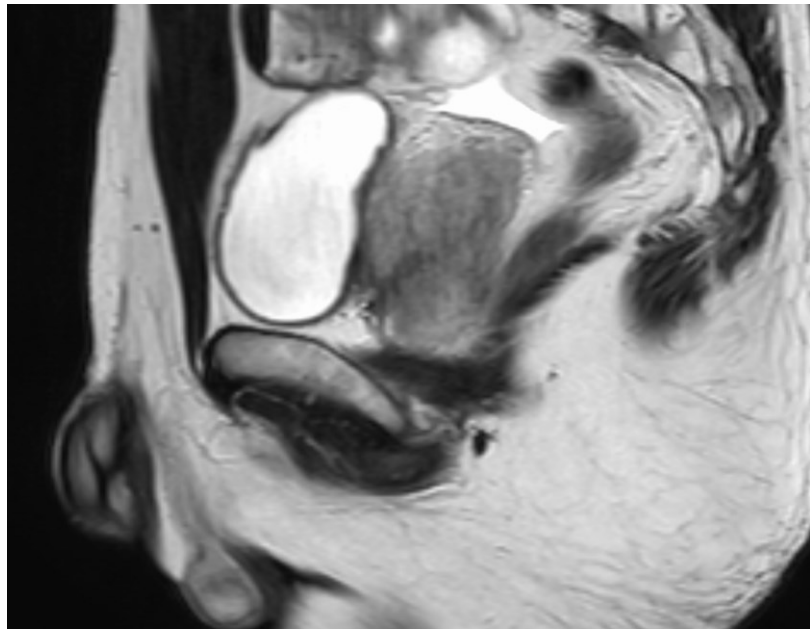




T2WI 冠状断



T2WI 矢状断



# 造影CT(連続画像)



























